

PLASTICS

KePlast i1100 Eco

The cost-optimized solution for hydraulic injection molding machines



The eco version of the KePlast i1100 control system meets the particular needs of manufacturers of standard injection molding machines in selected markets. The system offers a wide variety of features at an attractive price point for quick and low-cost automation of a large percentage of hydraulic injection molding machines. The KePlast i1100 Eco is available with an 8", 10" or 12" TFT display and a microswitch keyboard.

Performance & technology boost control

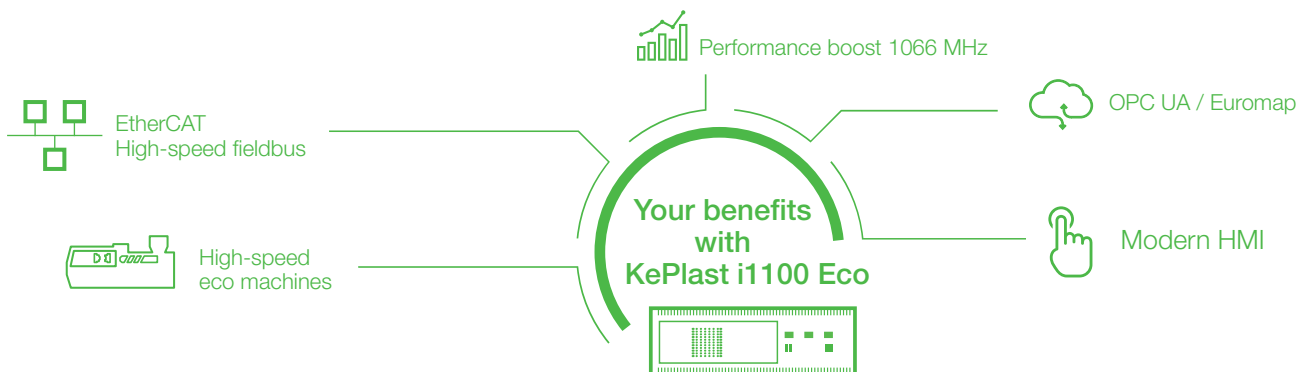
The new CP 035/E is an attractive mix of performance upgrades and new technology features - unique in the segment of eco-hydraulic machines. With the power of 1066 MHz and the current x86 CPU architecture, the new controller is ready for the control tasks of the future. The I/O configuration is optimized for classic eco machines, but optional I/O modules or a servo pump can be connected via the EtherCAT high-speed fieldbus.

Solution for high-speed eco machines

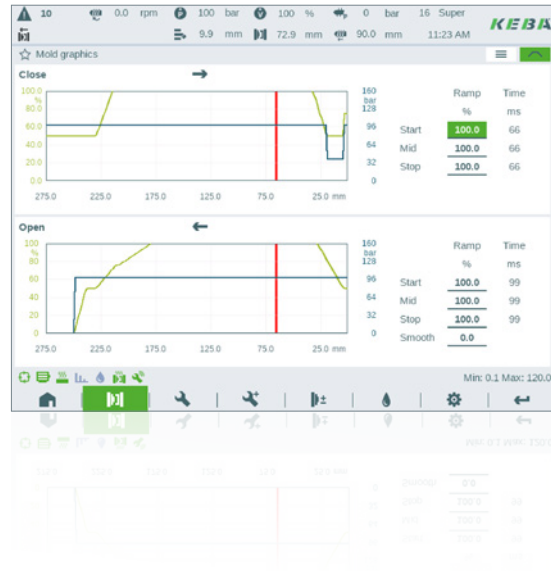
Due to a sophisticated solution on the hardware level, the fast cut-off reaction of 125 μ s and a minimized jitter guarantees a stable process. This technology feature combined with fast 1ms task cycles makes the new KePlast i1100 Eco system perfectly designed for demanding applications in the eco sector – such as high-speed hydraulic runners.

Future-proof and investment protection

Its unbeatable scalability and future-proof technology characterize KePlast. Customers who start with a KePlast i1100 Eco configuration can effortlessly expand their machine portfolio upwards and switch to a system from the KePlast i1100 or KePlast i2000 series – the KEBA technology grows seamlessly with them. Its state-of-the-art Linux software platform enables high-end features such as EUROMAP 77 or OPC UA and integration into the KePlast EasyNet MES.



Modern Design & Best Usability



The focus is on the user

The user interface of KePlast i1100 Eco shines in new splendor. The modern premium design of the HMI further enhances your machine and enables efficient and ergonomic operation at the same time. The operating screens and navigation remain unchanged – familiar operating sequences offer maximum efficiency in ergonomics.

Control	KePlast i1170 Eco	KePlast i1175 Eco	KePlast i1180 Eco
CPU	CP035/E: High-speed Intel x86, 1x 1066MHz		
Memory	1GB RAM, Micro SD card slot		
Interfaces	1x EtherCAT, 1x Ethernet, 2x USB, 1x CAN, 1x RS232/485		
Graphic interface	LVDS interface for OP 3x1 monitor panels		
Onboard I/Os	32 DI, 40 DO, 5 AI, 4 AO, 8 TI		

Operating panel	KeTop OP 331	KeTop OP 341	KeTop OP 351
Display	8.4" SVGA TFT	10.4" SVGA TFT	12.1" SVGA TFT
Resolution [px]	800 x 600 SVGA		
Keys	Micro switch keyboard		
Operation	Cursor navigation, numeric keypad		
Machine operation	31 keys / 10 leds	36 keys / 15 leds	36 keys / 15 leds
Digital inputs	16 digital inputs for external switches and push-buttons		

Software technology	
Operating system	Linux OS
Cycle time & features	1ms cycle time, up to 125µs fast cut-off reaction
Visualization system	KeView Basic
Options	EUROMAP 77